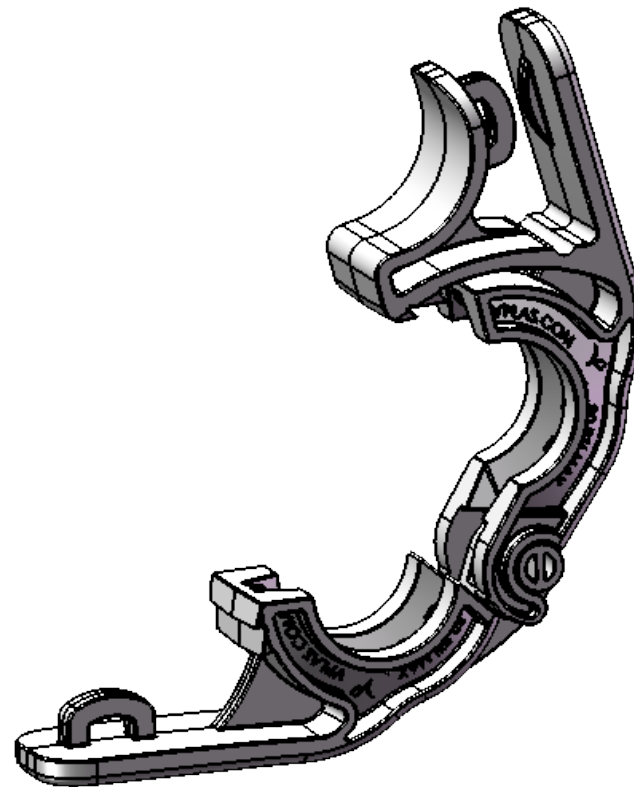
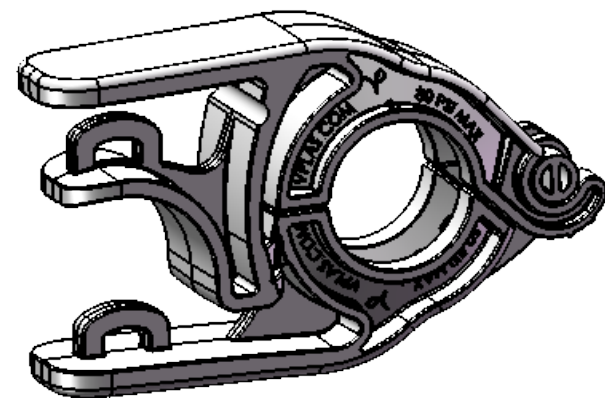
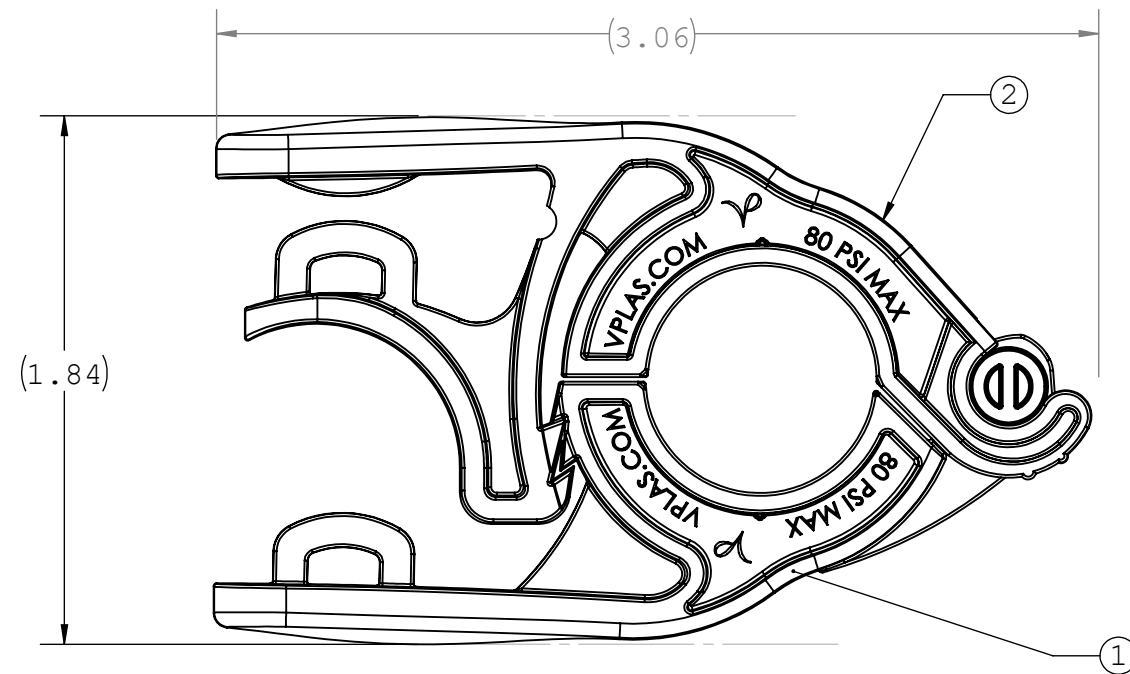
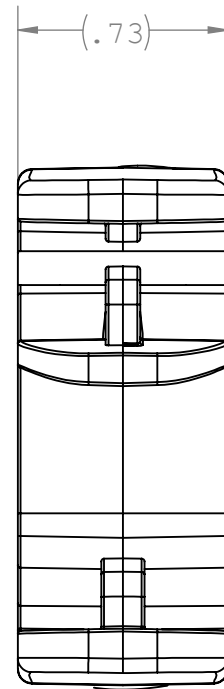


NOTES: FOR MORE DETAILS SEE YOUR V.P. SERVICE REP.

REVISIONS			
REV.	DESCRIPTION	DATE	APPROVED
A	Initial Release	6-30-15	H.L
B	ECO 390	06-04-19	FJL



UNLESS OTHERWISE SPECIFIED DIMENSIONS ARE IN INCHES TOLERANCES ARE:		<b>VALUE PLASTICS, INC</b>			
FRACTIONS    DECIMAL    ANGULAR ±            .XX ±.01    ± 1° .XXX ±.005 .XXXX ±.001		PART NUMBER: CPAN75			
DO NOT SCALE DRAWING		DESCRIPTION: Easy-Open Clamp, Mini Flange, ½" (17.7mm) to ¾" (19.0mm)			
DRAWN BY: T. Whitaker	DATE: 6/4/2019	SIZE: <b>B</b>	SCALE: NTS	VER: 	DWG. NO. 1031276
MANAGER: Frank.Lombardi		© 2011 VALUE PLASTICS, INC			REV B
				SHEET: 1 OF 1	

**FOR REFERENCE ONLY**